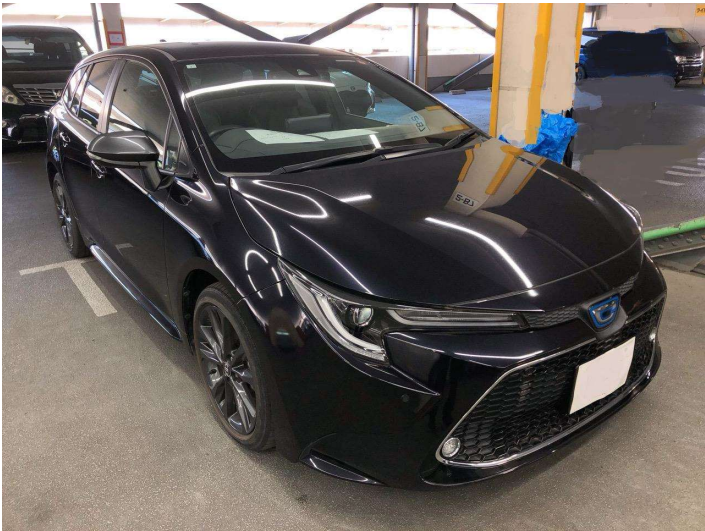


2021 Toyota Corolla Hybrid Touring WXB Wagon



Purchase Price

\$29,880

Includes GST

Excludes on-road costs of \$495

Indicative repayments

\$145.87 per week*

Based on a 60 month term & 10% deposit.

Total repayments (260) = \$40,962.9

MARAC

finance

NOW

Gain peace of mind with Mechanical Breakdown Insurance. Ask us how.

provident

insurance

Top features

» ABS Brakes

» Air Bag(s)

» Air Conditioning

» Alloys 17 Inch

» Android Auto

» Apple CarPlay

» Auto Headlights

» Automatic High Beam

» Blind Spot Monitoring

» Bluetooth

» Central Locking

» Central Locking

» Curtain Airbags

» Drivers Seat Height Ad...

» Electric Mirrors

» Electric Mirrors

» Electric Windows

» Electronic Stabifty Co...

Body Style	5 door, Station Wagon	Reg No.	-
Odometer	29,800 km	Ext Colour	Black Metallic
Engine	1800 cc, Hybrid	History	-
Fuel Type	Hybrid	Seats	5 seats, Half Leather
Transmission	Auto	CO2 Emissions	-
Wheels	-	Energy Economy	-
VIN	-		
Interior	Black / Grey		
Safety	-		



Scan this QR code for more info
Stock ID: 10451

* Wilkinson Trading is not a lender nor a financial adviser. Any amounts displayed should not be seen as an offer of finance or taken as financial advice. The interest rate, fees and loan term used in this calculation may not actually represent those available from lenders. Actual interest rates, fees and loan terms will vary per lender and are typically based on an assessment of your credit risk and responsible lending criteria. Any repayment amounts displayed are indicative only and have been calculated using several other indicative inputs. The interest rate used in this calculation is an arbitrary 12.95%, however exact interest rates vary per lender. The term of the loan used in this calculation is 60 month. Exact terms available vary per lender although options typically include 6, 12, 18, 24, 36, 48 and 60 months. This calculation also includes two typical mandatory fees charged by lenders. These are an account admin fee of \$1.80 per month (other payment frequencies may be available) and a one-off establishment fee of \$395.00. Typically, this fee can be paid upfront or, as in this calculation, be capitalised over the contract term, ie. included in the loan amount. These fees can vary per lender and other non-mandatory fees and charges may also apply. The total amount of repayments has been calculated by multiplying 260 weekly repayments (based on a 60 month term) by the weekly repayment amount of \$145.87 which equals \$40,962.90. This calculator does not consider any of your own personal circumstances and we strongly suggest you seek budgeting advice prior to committing to any loan contract. Responsible lending criteria and lender terms and conditions will likely apply to any finalised loan contract. Proof of security and/or vehicle insurance may also be required before proceeding.

Generated 19 May 2025 12:39