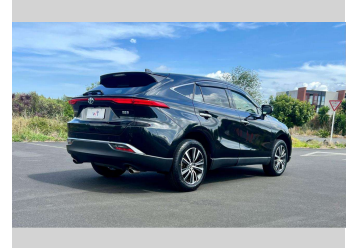


2021 Toyota Harrier Hybrid G Leather Package




Purchase Price **\$35,950**

Includes GST
Excludes on-road costs of \$495


Indicative repayments

\$174.52 per week*

Based on a 60 month term & 10% deposit.
Total repayments (260) = \$49,019.52



Gain peace of mind with
Mechanical Breakdown Insurance. Ask us how.



Top features

- » ABS Brakes
- » Air Conditioning
- » Alloys 18 Inch
- » Android Auto
- » Apple CarPlay
- » Auto Headlights
- » Automatic High Beam
- » Bluetooth
- » Curtain Airbags
- » Electric Mirrors
- » Electric Mirrors
- » Electric Seats
- » Electric Tail Gate
- » Electric Windows
- » Electronic Stability Co...
- » Fog Lights
- » Grade 4.5
- » Heated Front Seats

Body Style
5 door, SUV

Odometer
92,500 km

Engine
2500 cc

Fuel Type
Hybrid


Transmission
Auto

Wheels
-

VIN
7AT0H634X26021998

Interior
Black / Grey, Full Leather

Safety



Based on 2025 VSRR rating

Reg No.
-

Ext Colour
Celestial Black Pearl

History
-

Seats
5 seats

CO2 Emissions
★★★★☆
104 grams/km

Energy Economy
★★★★☆☆
**Annual fuel cost of \$1,760
4.5L per 100km**


Cost per year is an estimate based on petrol price of \$2.80 per litre and an average distance of 14000 km. Emissions and Energy Economy figures standardised to 3P WLTP.



Scan this QR code for more info
Stock ID: 10573



Wilkinson Trading | Phone 09 580 1417 | Email wilkinson.trading@xtra.co.nz
535 Ellerslie-Panmure Highway, Panmure, Auckland 1060, New Zealand
www.wilkinsontrading.co.nz



★★★★★
4.83 | 648 reviews

*Wilkinson Trading is not a lender nor a financial adviser. Any amounts displayed should not be seen as an offer of finance or taken as financial advice. The interest rate, fees and loan term used in this calculation may not actually represent those available from lenders. Actual interest rates, fees and loan terms will vary per lender and are typically based on an assessment of your credit risk and responsible lending criteria. Any repayment amounts displayed are indicative only and have been calculated using several other indicative inputs. The interest rate used in this calculation is an arbitrary 12.95%, however exact interest rates vary per lender. The term of the loan used in this calculation is 60 month. Exact terms available vary per lender although options typically include 6, 12, 18, 24, 36, 48 and 60 months. This calculation also includes two typical mandatory fees charged by lenders. These are an account admin fee of \$1.80 per month (other payment frequencies may be available) and a one-off establishment fee of \$395.00. Typically, this fee can be paid upfront or, as in this calculation, be capitalised over the contract term, ie. included in the loan amount. These fees can vary per lender and other non-mandatory fees and charges may also apply. The total amount of repayments has been calculated by multiplying 260 weekly repayments (based on a 60 month term) by the weekly repayment amount of \$174.52 which equals \$49,019.52. This calculator does not consider any of your own personal circumstances and we strongly suggest you seek budgeting advice prior to committing to any loan contract. Responsible lending criteria and lender terms and conditions will likely apply to any finalised loan contract. Proof of security and/or vehicle insurance may also be required before proceeding.